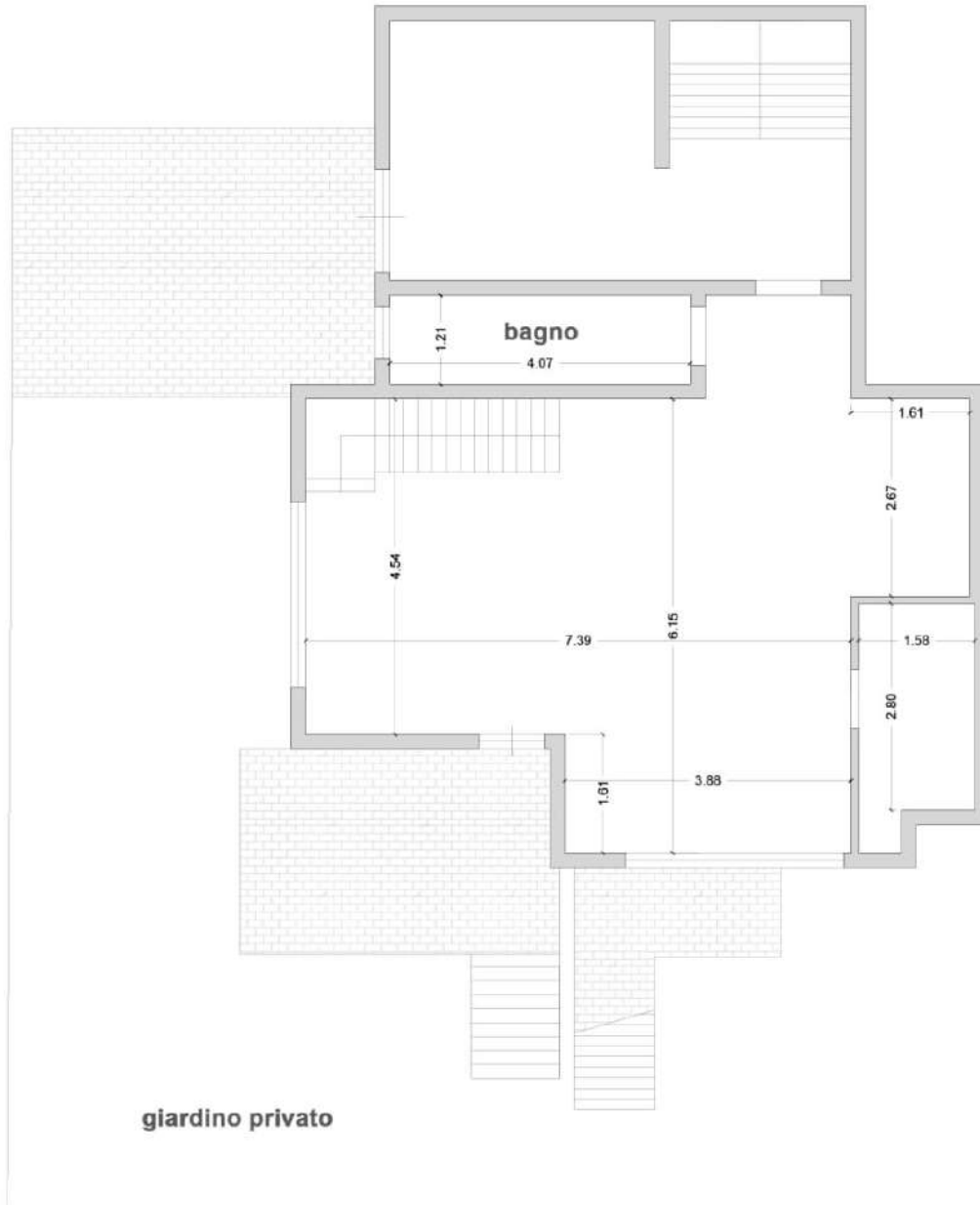


**Appartamento Via Vivanti**  
**piano seminterrato**  
**mq. commerciali 112,90**  
**mq.calpestabili 78,20**  
**scala 1:100**



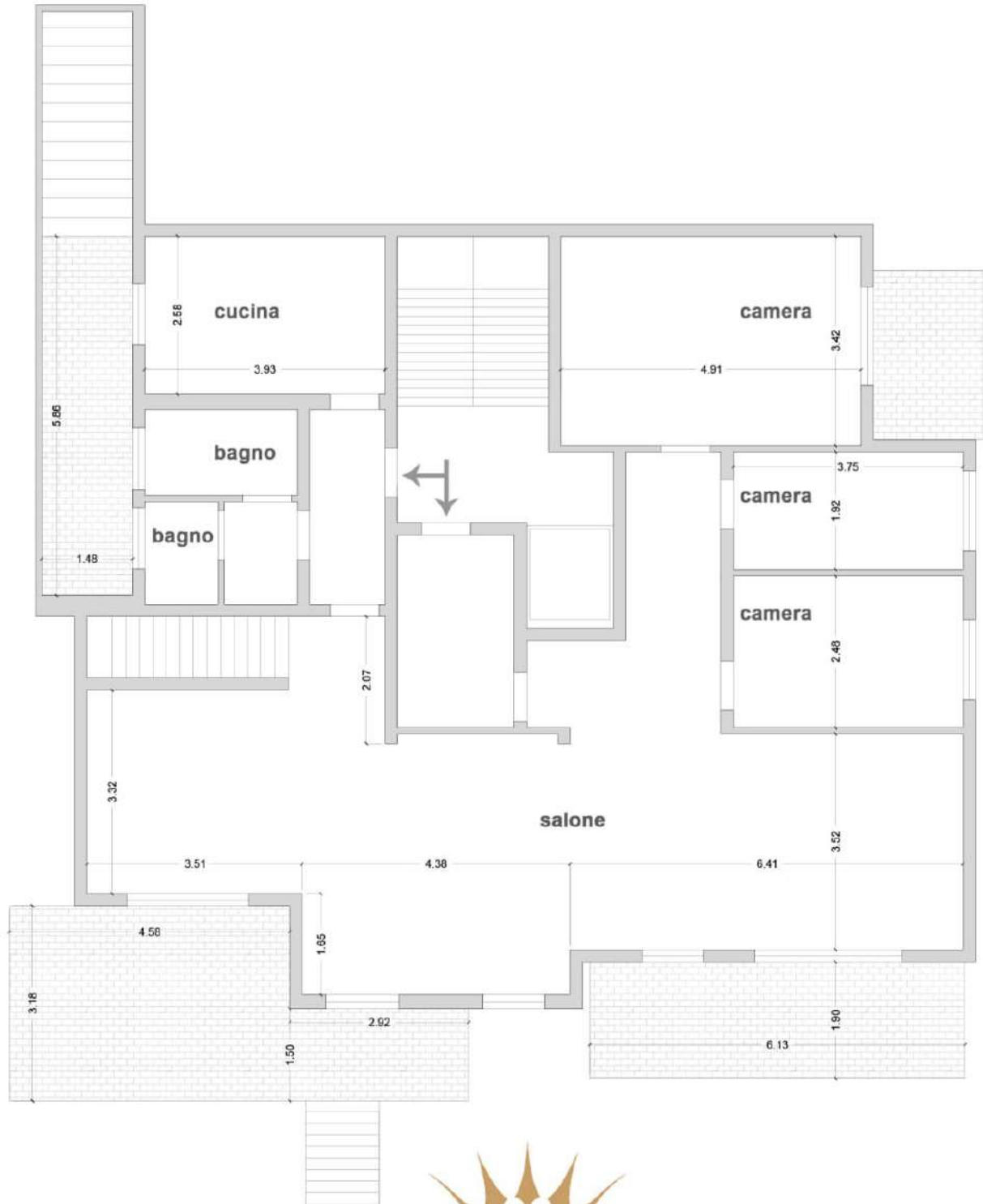
# Appartamento **Via Vivanti**

primo piano

mq. commerciali 206,10

mq.calpestabili 141,60

scala 1:100



# ROMVSRE

IMMOBILI ESCLUSIVI